



BOUTIQUE. CO

**THE  
RUTHERFORD**

HOXTON


---

## THE BOUTIQUE COLLECTION

---

The Rutherford, 43-44 Hoxton Square, Shoreditch, London NI 6PB

---



## WELCOME TO THE RUTHERFORD

High-spec office space on Hoxton Square in the heart of Shoreditch, with all the amenities you could ever need and easy access to one of London's oldest garden squares.

The Rutherford is part of Hoxton Campus, a cluster of workspaces oriented around one of London's oldest and most notable public gardens, Hoxton Square. Inside, the five floors are filled with stylish high-spec office spaces available on flexible plug-and-play leases, modern meeting rooms, and useful amenities. Designed for the needs of cutting-edge businesses and with easy access to all the delights of Shoreditch, it's an office space that can revolutionise your way of working.

It sits on the southeast corner of Hoxton Square, which was laid all the way back in 1683. Since then, the square has built a name for itself through its centrality to London's furniture industry in the nineteenth century, the anarchist and feminist movements in the early twentieth, and, more recently, the careers of contemporary artists including Damien Hirst and Tracey Emin.

It's now home to Hoxton Campus, a self-described cluster of workspaces bursting with personality. One of these workspaces is The Rutherford, which itself also has an illustrious history including former use as a furniture warehouse, chair store, recording studio, film director's office, and design agency.

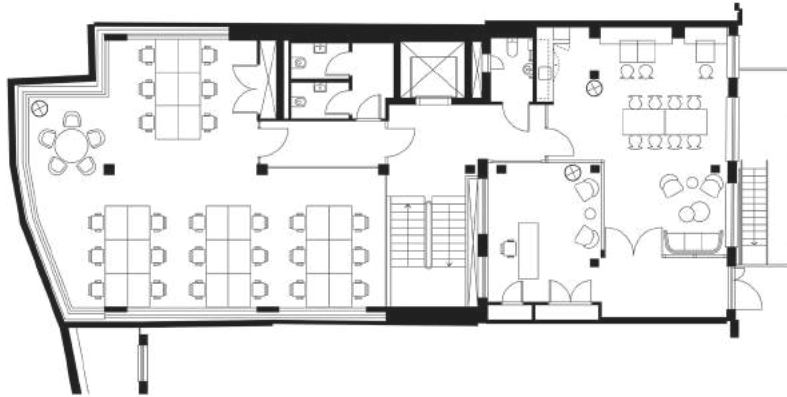
Now, though, it's found its new purpose as a workplace that offers one of the best serviced office experiences in Hoxton. With office spaces available in a range of sizes, from 300sqft to 7000sqft, all unbranded and fully-fitted with ergonomic chairs and sit/stand desks, there's something for businesses of all types.

And, with all the additional features and facilities you could need, including private and communal meeting rooms, bicycle storage, kitchen facilities, and on-site showers, you can make every day at The Rutherford your most productive yet.





G



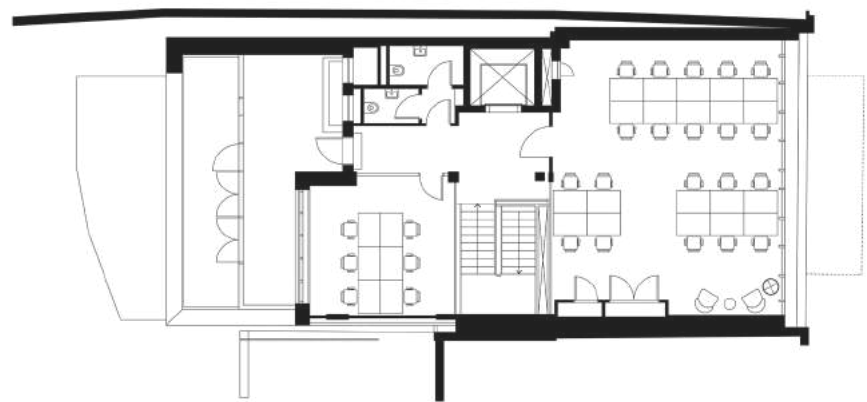
I



2



3





## THE BOUTIQUE COLLECTION

Choose your workspace



## FEATURES AND FACILITIES

- Sit-stand desks and full AV equipment
- Fully fitted and furnished high-tech space
- High ceilings
- Views overlooking Hoxton Square
- Public outdoor space
- Bike storage
- Showers
- Mailing and trading address
- Dog-friendly
- Reception
- Barista-style coffee
- WiFi
- Business-grade fibre-optic broadband
- Rent, business rates, utilities, service charge, and building insurance
- Daily cleaning and general building maintenance
- Hand sanitising stations
- Air conditioning and fresh airflow
- Designed for wellbeing and sustainability
- 24-hour access

## CHOOSE YOUR WORKSPACE



### Private offices

High-spec, fully-fitted office space available in a range of sizes, all unbranded and on flexible leases.



### Meeting rooms

A range of communal and private meeting rooms available for use on-demand.



### Virtual office services

Make a strong impression with virtual office services including use of our business address.



---

## THE BOUTIQUE COLLECTION

---

Map location

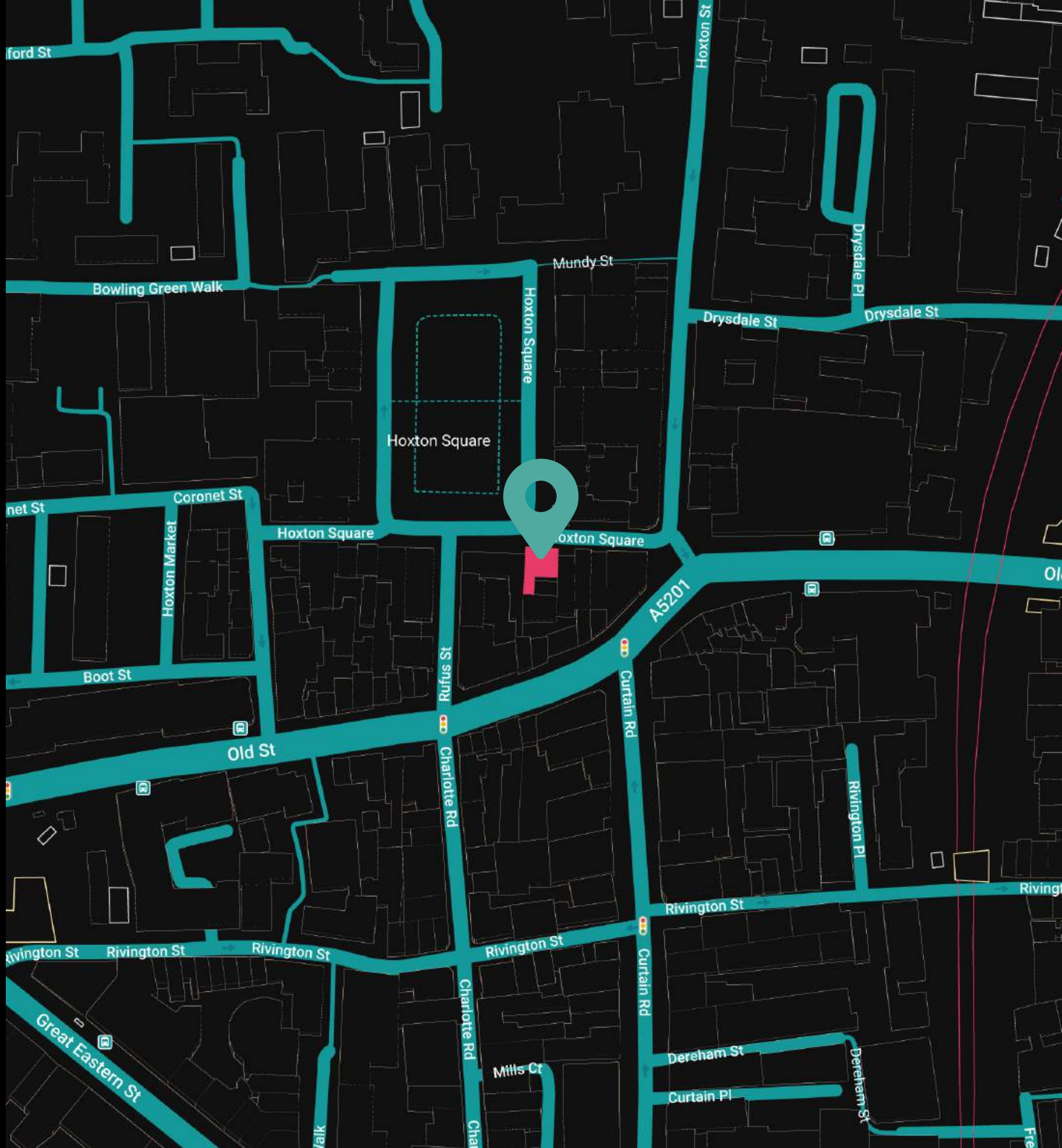
---

## LOCATION

The Rutherford  
43-44 Hoxton Square  
Shoreditch  
London  
NI 6PB

The Rutherford is perched on the southeast corner of Hoxton Square, Hoxton's only public garden square which was laid all the way back in 1683, making it one of the oldest in London.

It's just minutes on foot from Old Street Station and Shoreditch High Street, offering rail connections to the rest of London and beyond. The building also contains secure bicycle storage, giving cycling commuters the chance to pedal to work every day.





## THINGS TO DO NEARBY

### UNWIND IN HOXTON SQUARE

With Hoxton Square right on your doorstep, you've got one of London's oldest and most beautiful public gardens available to you. The square is also home to plenty of cafes and restaurants.

### ENJOY THE SHOREDITCH'S SCENE

Shoreditch is one of London's most exciting areas, and The Rutherford is in close proximity to some of the highlights, including XOYO and BOXPARK Shoreditch.

### WE RECOMMEND

 Cottons Restaurant

 The Reliance Shoreditch



BOUTIQUE. CO

# THE RUTHERFORD

HOXTON

GET IN TOUCH WITH US:

☎ 020 3405 7000

✉ [enquiries@boutique.co](mailto:enquiries@boutique.co)

FOLLOW US:



[@boutiqueworkco](https://www.instagram.com/boutiqueworkco)

[www.boutique.co](http://www.boutique.co)

