



BOUTIQUE. CO

# DICKENS HOUSE

MIDTOWN

THE BOUTIQUE COLLECTION

Dickens House, 1 Fetter Lane, London EC4A 1BR

WELCOME TO DICKENS HOUSE

High-spec serviced office space housed in an iconic newly-refurbished building, full of useful features, in London's Midtown.

Dickens House is a workspace built for modern businesses. Fully renovated, offering a range of diverse workspace options, and packed with all the features needed to maximise productivity, it's an outstanding option for anyone looking for a new office in London's Midtown. And, standing on the corner of Fetter Lane and Fleet Street, it's in the perfect location for easy access from nearby tube stations including Chancery Lane, Temple, and Blackfriars.

Fetter Lane – coming from the Old French word for lawyer, 'faior' – has long been a hotspot for those in the legal profession in London. It's now a bustling area for businesses of all sorts, the ancient route inhabited by thriving companies and fabulous food and drink options.

The street has plenty of other historic associations, too, including marking the Western boundary of the Great Fire of London's trail of destruction. Dickens House is based at 1 Fetter Lane, on the corner of Fleet Street. Inside, you'll find a range of private, fully-furnished, and serviced office spaces suitable for businesses of 2-400 people. Self-contained and unbranded, they're ideal for businesses looking for a space they can truly make their own.

All of the workspaces have been recently renovated, creating clean contemporary offices that perfectly complement the more colourful communal areas. There are high ceilings throughout, and natural light permeates the office spaces creating a bright and airy atmosphere. There are also plenty of amenities available that round out Dickens House's proposition, including flexible access meeting rooms, a coworking lounge, private phone booths, 24/7 access, and virtual office services.

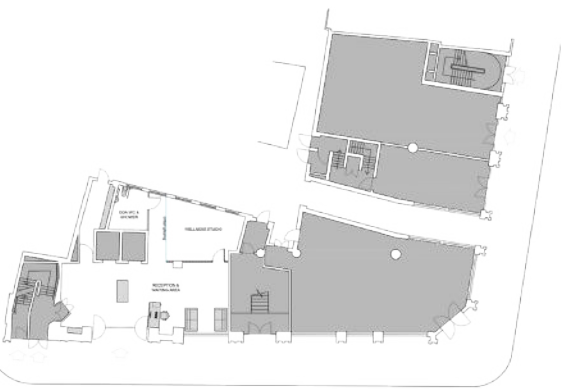
And, to complete the deal, it's a fantastic location for accessibility by road or rail, and there are countless local delights to check out, from restaurants to cultural attractions.



THE BOUTIQUE COLLECTION

Floor Plans

G



I



2



3



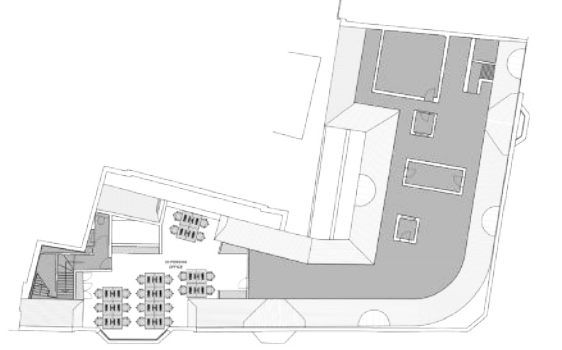
4



5



6







THE BOUTIQUE COLLECTION

Choose your workplace



FEATURES AND FACILITIES

- Meeting rooms
- Fully furnished
- 24 hour access
- Break-out areas
- Phone booths
- Dog-friendly
- Cyclist-friendly
- Passenger lift
- Barista-style coffee
- Designed for wellbeing
- Mailing and trading address
- Business grade fibre-optic broadband
- Part of The Boutique Members Club
- Rent, business rates, utilities, service charge and building insurance

CHOOSE YOUR WORKSPACE

|  |   |
|--|---|
|  | <b>Private Offices</b><br>A collection of high-quality private flexible serviced offices.   |
|  | <b>Meeting Rooms</b><br>Thoughtfully-designed meeting rooms available on-demand.  |
|  | <b>Virtual office services</b><br>Mail handling, use of business address, and other virtual services available in bespoke packages. |
|  | <b>The Boutique Members Club</b><br>Access to over 40 design-led meeting rooms in and around London at special rates.               |
|  | <b>Membership + Virtual Offices</b><br>Great wifi, coffee and a strong address for your registered business.                        |





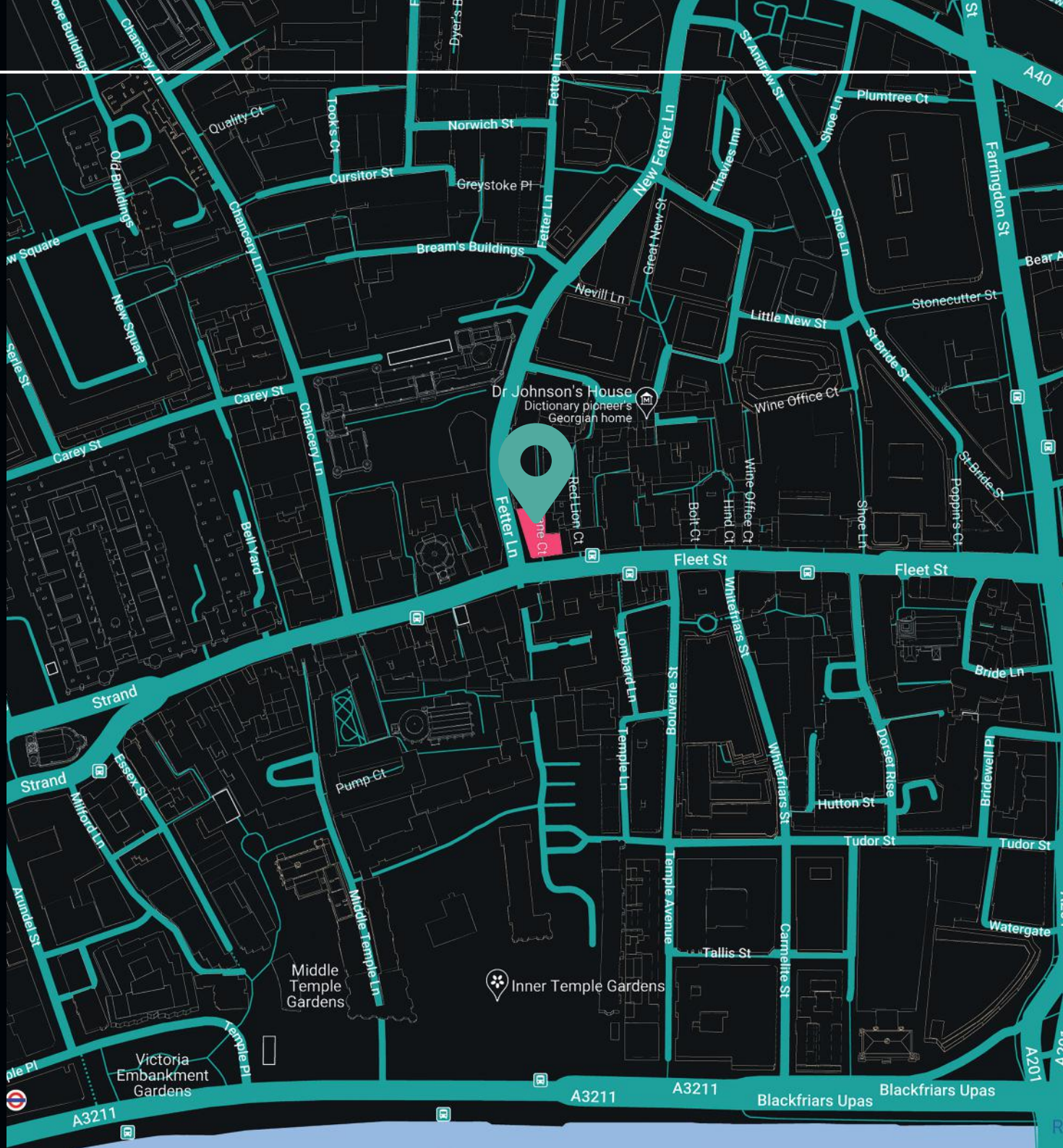
THE BOUTIQUE COLLECTION

Map location

LOCATION

Dickens House stands at 1 Fetter Lane, on the corner of Fleet Street and halfway between St Paul's Cathedral and Somerset House.

This outstanding location puts it in easy walking distance of tube stations including Chancery Lane, Temple, Blackfriars, and St Pauls, giving you ample transport options. You're also close to City Thameslink and London Blackfriars, providing National Rail connections to major towns and cities outside of London.



THE BOUTIQUE COLLECTION

Things to do nearby



THINGS TO DO NEARBY

EXPLORE MIDTOWN

Midtown encompasses Holborn, Farringdon, Bloomsbury, and Covent Garden, filled with cultural sites, fabulous food and drink options (try Dilieto just next door for the biggest and best sandwiches in the City), and populated by companies including Google and Goldman Sachs.

TAKE THAMES WALKS

Just 10 minutes on foot from the north bank of the Thames, Dickens House is perfectly located to facilitate lunch-time strolls. Pick a direction, towards the Tower of London or Westminster, and enjoy the fresh air and exercise.

 Simmon's Bar | Temple

 Dilieto





BOUTIQUE. CO

# DICKENS HOUSE

MIDTOWN

GET IN TOUCH WITH US:

☎ 020 3405 7000

✉ [enquiries@boutique.co](mailto:enquiries@boutique.co)

FOLLOW US:



@boutiqueworkco

[www.boutique.co](http://www.boutique.co)

