



BOUTIQUE. CO  

---

HOLBORN  
TOWN HALL  
HOLBORN



## WELCOME TO HOLBORN TOWN HALL

More than 25,000 square feet of beautifully refurbished serviced office space, situated in the historic Grade II listed Holborn Town Hall.

A landmark building on High Holborn, Holborn Town Hall has an illustrious history. The beautifully-crafted French Renaissance style façade and period internal features reflect that storied past, however the office space contained within is anything but antiquated. With six floors of private office suites and a breakout space with the wow-factor, all fully-furnished and unbranded, there's a workspace suitable for every type of business. This prominent building is close by to convenient transport connections including the Elizabeth line at Tottenham Court Road and the central and Piccadilly lines are accessible from Holborn station which is walking distance within seconds'. Covent Garden is also within a five minute walk providing you and the team with many of London's finest restaurants, bars and entertainment venues.

Holborn Town Hall predates The Metropolitan Borough of Holborn itself, built in 1894, six years before the borough was established in 1900. It was designed by William

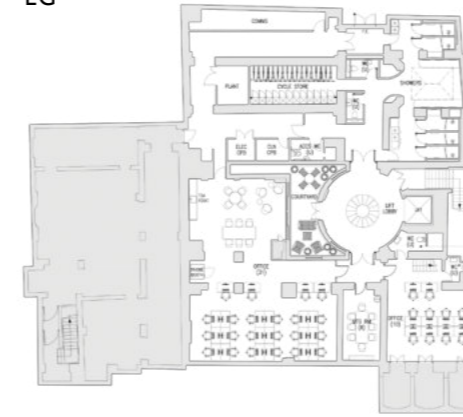
Rushworth and first saw use as a public library, before being expanded and repurposed as a town hall between 1906 and 1908, housing a court room on the first floor and council chambers on the ground floor. When the borough was merged with St. Pancras to form the London Borough of Camden in 1965, Holborn Town Hall was converted again. Following recent refurbishments, Holborn Town Hall has undergone a transformation once more.

While the beautiful period features, including the intricate façade and grandiose entrance lobby are preserved and cherished, there is a carefully curated modern interior design scheme to complement the breath-taking architecture and historic features. What makes this workspace stand out amongst the other solutions in the Holborn market is the private offices themselves. Not only are they diverse in size and layout to suit flexible working models but every single office is different and not just your typical standard partitioned office. They are special and inspiring in their own way, it is simply a matter of which one will inspire you and the team most. There's an abundance of natural light throughout, and business-grade fibre-optic broadband to keep you productive.

There is also a range of amenities that offer additional value including bookable meeting rooms, AC, phone booths and bike racks and showers. The workspace is also dog friendly.



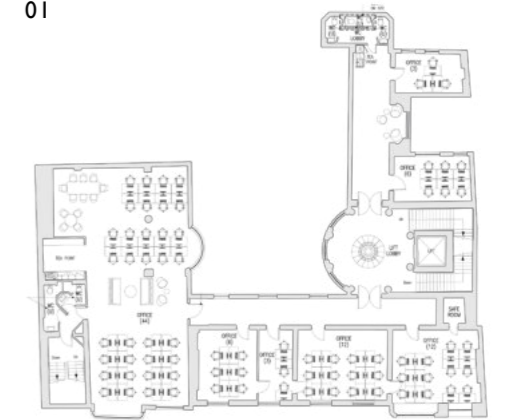
LG



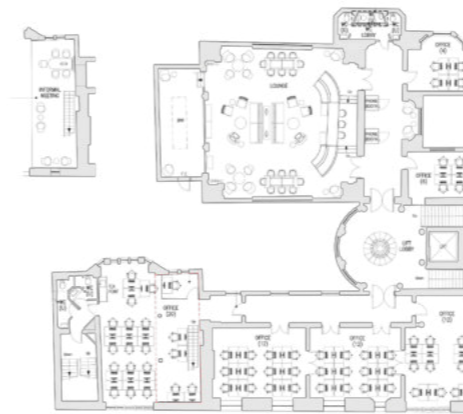
G



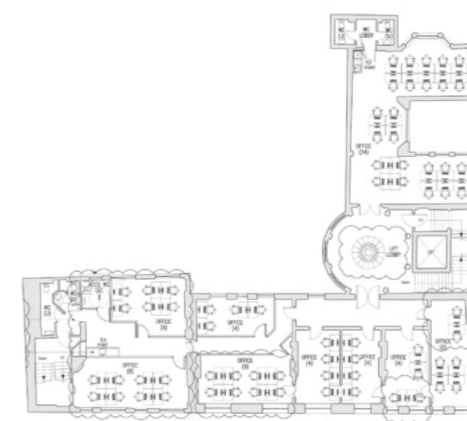
01



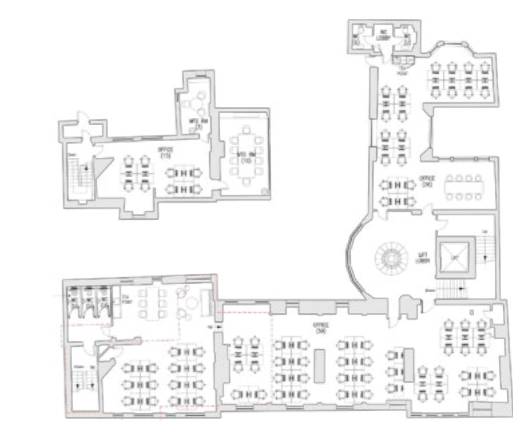
02



03



04





## THE BOUTIQUE COLLECTION

Choose your workspace



## FEATURES AND FACILITIES

- Dog friendly
- Part of the boutique members club
- Unlimited barista style coffee
- Boardroom
- Breakout space
- Phone booths
- Excellent natural light throughout
- High ceilings and period features
- Repurposed Grade II listed building
- Bike racks & showers
- Business-grade fibre optic broadband
- 24/7 access
- Reception services and onsite management team
- Aircon and fresh airflow
- Mailing and trading address
- Passenger lift
- Rent, business rates, utilities, service charge and building insurance inclusive
- Fully furnished workspace
- Self-contained floors available

## CHOOSE YOUR WORKSPACE



### Private offices

A range of fully furnished and unbranded office space options spread across five floors.



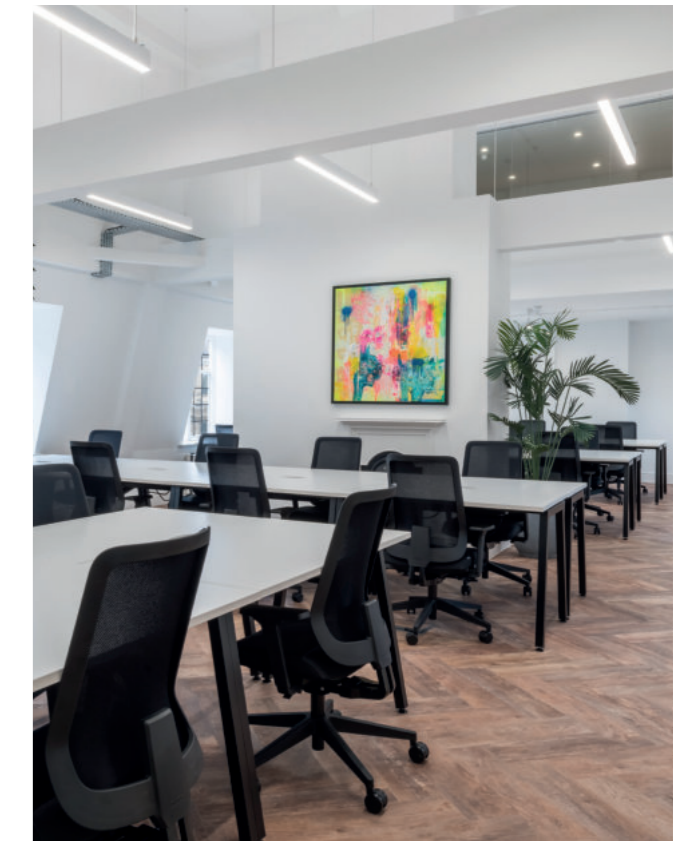
### Meeting room

Meeting room access available, perfect for presentations, pitches, video-conferencing and zoom calls.



### Virtual offices

Use of this desired London trading address as well as an (020) London number in order to give your clients the best first impression for your business.



## THE BOUTIQUE COLLECTION

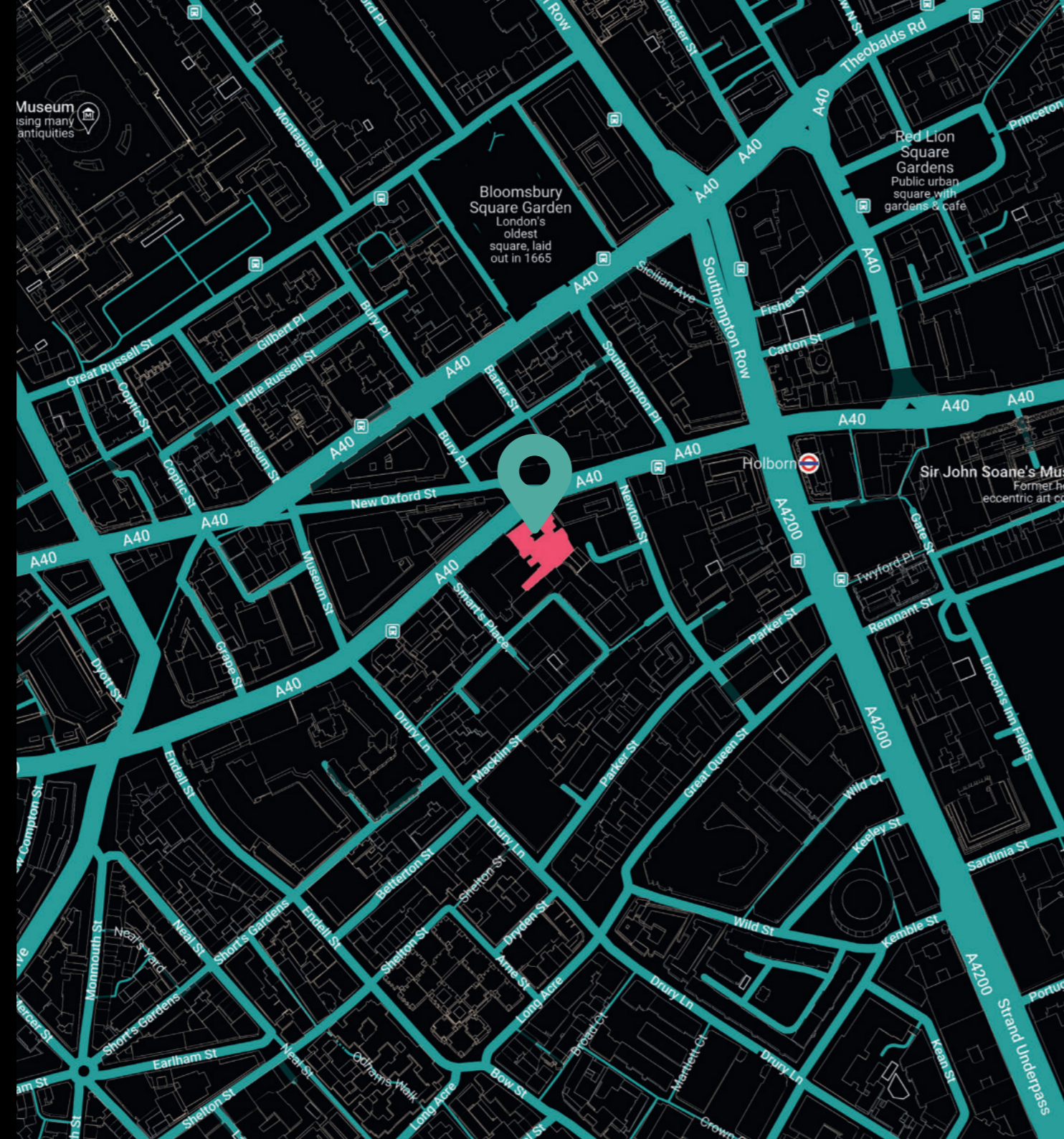
Map location

## LOCATION

193-197 High Holborn  
London  
WC1V 7BD

The iconic Holborn Town Hall was first built as a library, designed by William Rushworth in the French Renaissance style and opened in 1894. It was later converted to fulfil the need for a town hall in the borough, and was reopened in its new purpose by the Lord Mayor in 1908.

It boasts an ornate external façade, and the internal spaces are full of magnificent period features, starting with the awe-inspiring marble entrance hall.



## THE BOUTIQUE COLLECTION

Things to do nearby




## THINGS TO DO NEARBY

### EXPLORE HOLBORN

Holborn is a thriving area in central London that's full of history and packed with food and drink venues. Make full use of your prime location and explore one of London's most exciting boroughs.

### GET CULTURAL

With The British Museum, the London Transport Museum, the Royal Opera House, and many more cultural institutions nearby, you'll never be short of things to do on your lunch break or after work.

-  Bar Polski
-  Colonel Saab
-  Hoxton Hotel



BOUTIQUE. CO  

---

HOLBORN  
TOWN HALL  
HOLBORN

GET IN TOUCH WITH US:

☎ 020 3405 7000

✉ [enquiries@boutique.co](mailto:enquiries@boutique.co)

FOLLOW US:



[@boutiqueworkco](https://www.instagram.com/boutiqueworkco)

[www.boutique.co](http://www.boutique.co)

